

# A set of 26 French Alphabet cards

perfect for practicing with your young learner

L'Alphabet

Français

## Tips:

Try printing on cardstock, they will last longer

Select the pages you want to print

Set your printer to borderless printing, or fit to page  
to ensure the edges of the card are printed

Be sure to print our pocket wallet to store the cards!  
two options to choose from

Print two sets and play memory

**HAVE FUN WITH THEM!**

A a



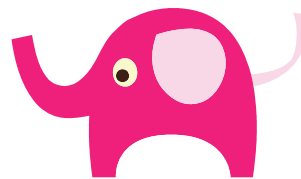
un alligator

B b



une bicyclette

E e



un éléphant

F f



le feu

C c



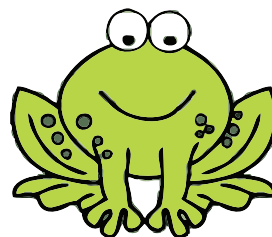
un cadeau

D d



un dinosaure

G g



une grenouille

H h



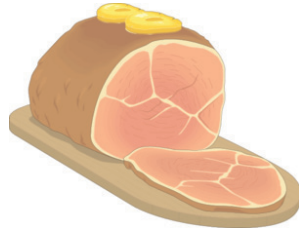
un hibou

I i



l'iglou

J j



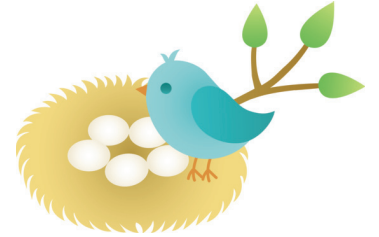
le jambon

M m



la maison

N n



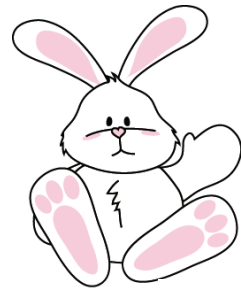
le nid

K k



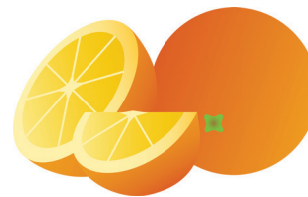
un koala

L l



un lapin

O o



une orange

P p



le parapluie

Q q



les quilles

R r



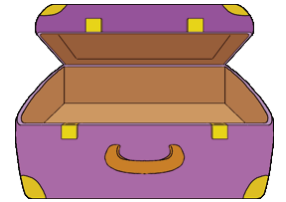
les raisins

U u



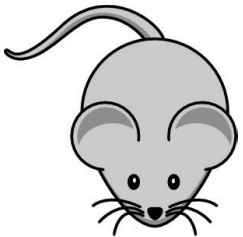
une usine

V v



une valise

S s



une souris

T t



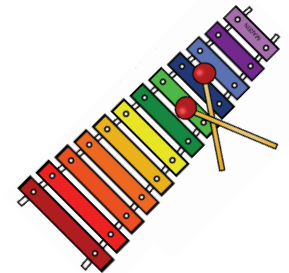
le tambour

W w



un wagon

X x



un xylophone

L'Alphabet  
Français

- How to make the pocket wallet:
- Cut out around the colored edge
  - Score the white dashed lines
  - Fold the sides in and the bottom flap up
  - Place your cards inside the wallet and wrap the sides around them first.
  - Glue or tape the sides.
  - Fold the bottom flap up and tape.
  - Make sure to not make it too tight around the cards so you can easily take them in and out.
  - Glue or tape the bottom flap to the back.

Z z



un zèbre

Y y



le yo-yo



cut the back flap here if you don't want the full cover over the top.  
glue back flap to the inside of the sides when folded to the back



**How to make the pocket wallet:**

Cut out around the colored edge

Score the white dashed lines

Fold along the lines

Place your cards inside the wallet and fold the back flap up to the top of the cards and over them.

Fold the sides in. Mark where they cross.

Glue or tape the sides.

Either make a slit in the front to put the front flap into, or glue a small piece of velcro to the flap and card deck to secure it closed.

Make sure to not make it too tight around the cards so you can easily take them in and out.